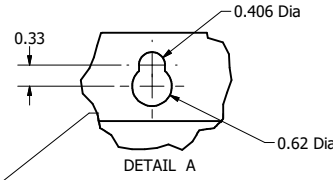
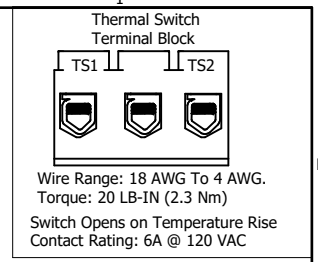
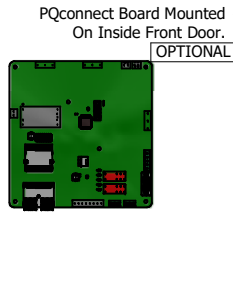
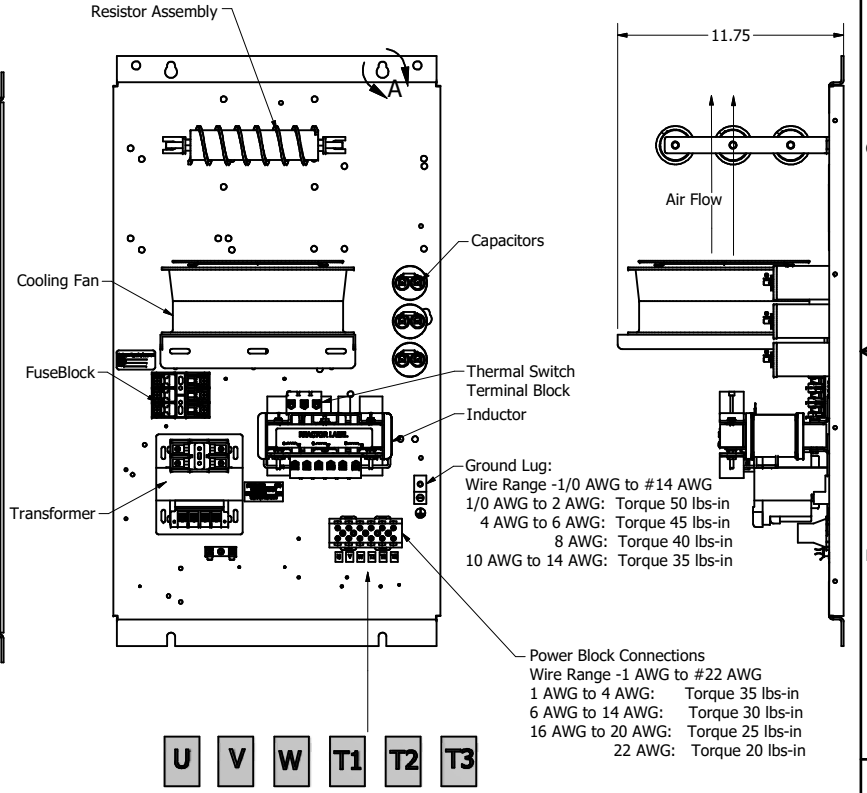
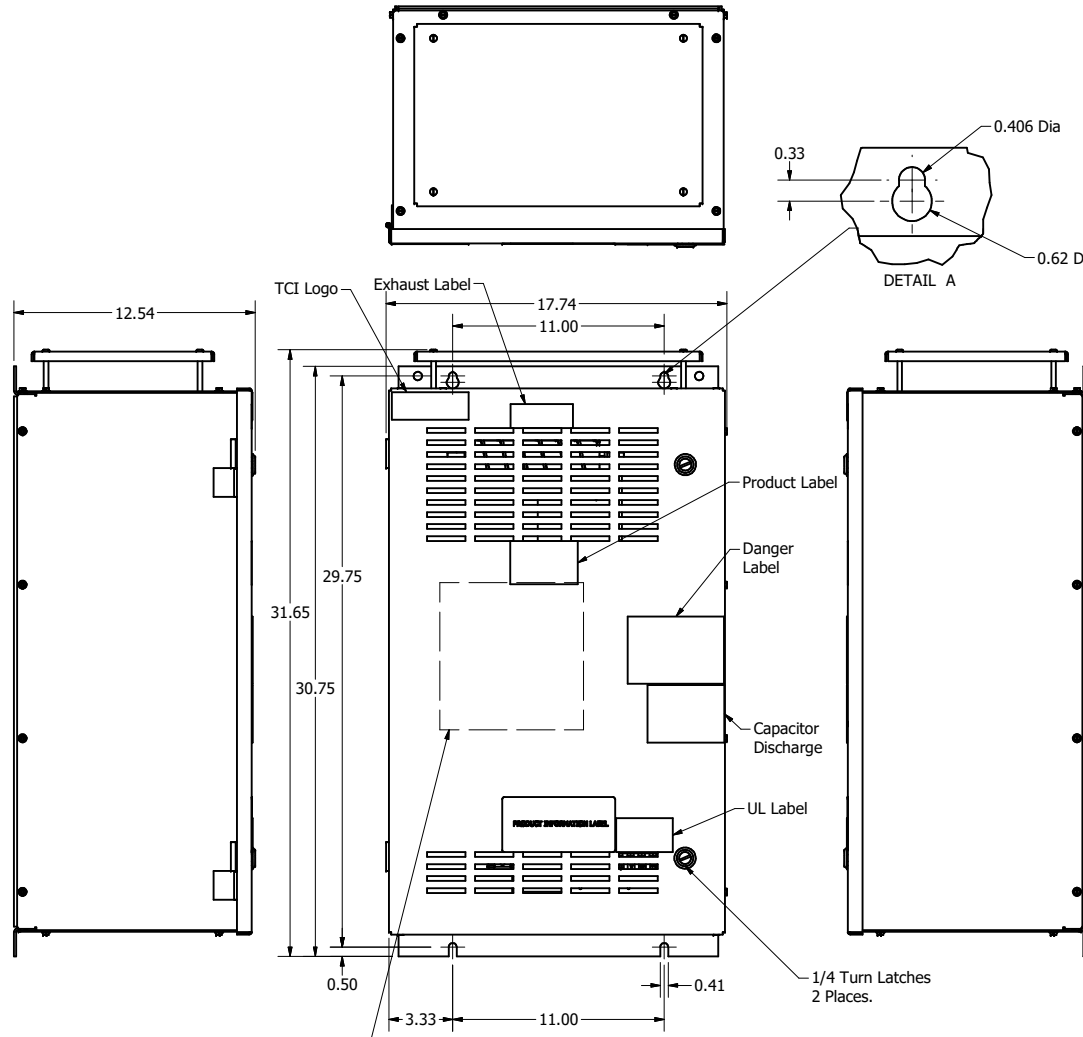


| SineWave Part Number | Schematic Drawing# | Approx Weight (LBS) |
|----------------------|--------------------|---------------------|
| KMG12A01A            | 24281-1A           | 109                 |
| KMG12A01P            | 24281-1P           | 110                 |

| HorsePower (HP) | kVar  | Max Amps | Voltage (V) | HZ | Phase |
|-----------------|-------|----------|-------------|----|-------|
| 7.5             | 0.868 | 12       | 480         | 60 | 3     |



D  
C  
B  
A



Customer Is Responsible For Installation to Meet All National And Local Electrical Codes.

Material(s) Shall be RoHS Compliant

|  |           |     |  |                              |  |
|--|-----------|-----|--|------------------------------|--|
| TCI, LLC CLAIMS PROPRIETARY RIGHTS IN THE MATERIAL HEREIN DISCLOSED. IT IS SUPPLIED WITHOUT PREJUDICE TO ANY PATENT RIGHTS OF TCI AND MAY NOT BE REPRODUCED OR USED TO MANUFACTURE ANYTHING SHOWN THEREIN WITHOUT WRITTEN PERMISSION FROM TCI. |           |     |  | TOLERANCES (EXCEPT AS NOTED) | W132 N10611 Grant Drive Germantown, WI 53022<br><b>KMG12A01- SineWave Filter</b><br>Enclosed Type 1, 7.5HP, 480V<br>104349DG |
|  |           |     |  | DECIMAL                      |  |
|  |           |     |  | .XX ± .25<br>.XXX ± .10      |  |
|  |           |     |  | FRACTIONAL                   |  |
| C Add PQconnect Board  | 6/17/2020 | DSW |  | ± 1/16                       | DRN BY DSW DATE 10/07/2010<br>SCALE 1/8 DRAWN BY TCI SHEET 1 OF 1  |
| NO REVISION  | DATE      | BY  |  | ± 1°                         |  |